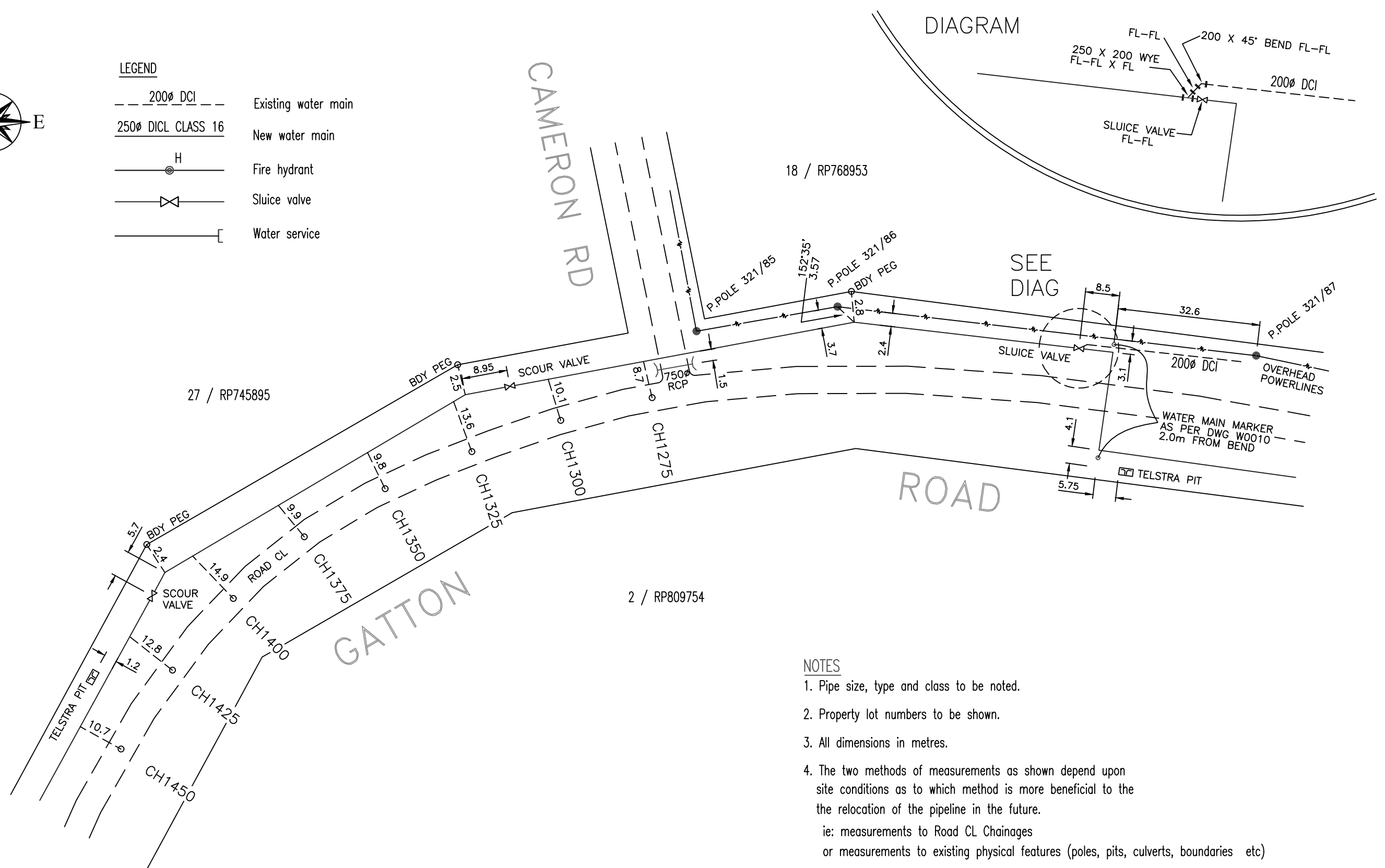
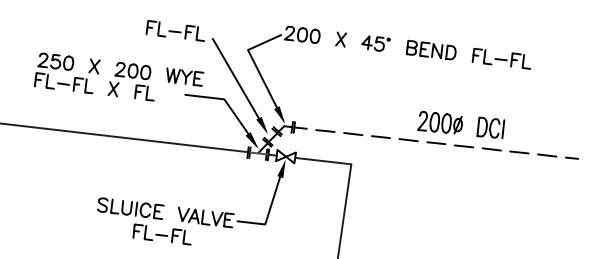


**LEGEND**

- 200ø DCI Existing water main
- 250ø DICL CLASS 16 New water main
- Fire hydrant
- Sluice valve
- Water service



**DIAGRAM**



SEE DIAG

- NOTES**
1. Pipe size, type and class to be noted.
  2. Property lot numbers to be shown.
  3. All dimensions in metres.
  4. The two methods of measurements as shown depend upon site conditions as to which method is more beneficial to the the relocation of the pipeline in the future.  
ie: measurements to Road CL Chainages  
or measurements to existing physical features (poles, pits, culverts, boundaries etc)
  5. Diagrams to be presented, indicating detailed areas and fittings

C	DEVELOPMENT MANUAL UPDATES AND AMENDMENTS 2018	26/10/18
B	MINOR AMENDMENTS	10/3/98
A	ORIGINAL ISSUE	1/3/97
REVISIONS		DATE



Email: [info@whitsundayrc.qld.gov.au](mailto:info@whitsundayrc.qld.gov.au) Web: [www.whitsundayrc.qld.gov.au](http://www.whitsundayrc.qld.gov.au)

**BOWEN**  
67 Herbert St  
Bowen 4805 Q  
Ph 07 4761 3600

**COLLINSVILLE**  
Cnr Stanley & Conway Sts  
Collinsville 4804 Q  
Ph 07 4785 5366

**PROSERPINE**  
83-85 Main St  
Proserpine 4800 Q  
Ph 07 4945 0200

WATER TRUNK MAIN  
SAMPLE AS-CONSTRUCTED PLAN

WATER  
Standard  
Drawing  
W-0021

A	B	C	
---	---	---	--